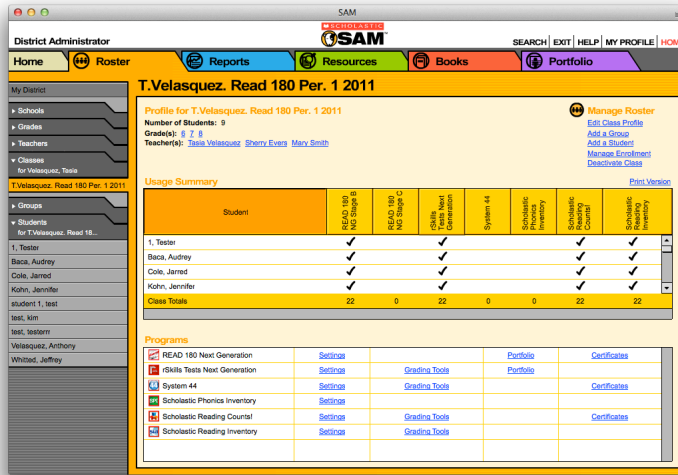
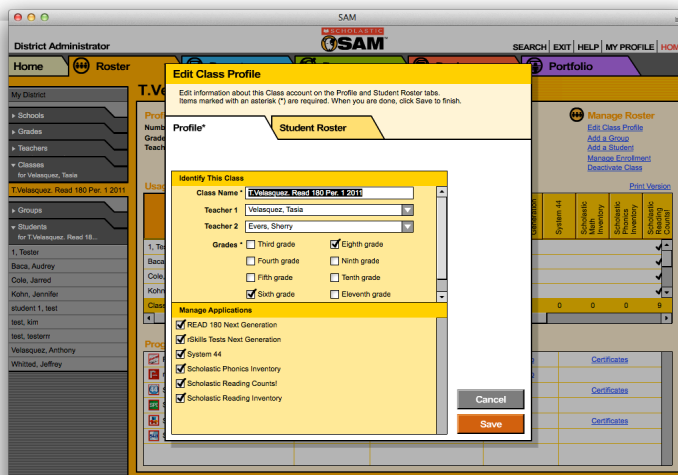


Setting a Class to Manage Student Applications

1. Sign into Scholastic Achievement Manager (SAM).
2. Use the SmartBar (the gray area on the lefthand side of the SAM window) to navigate to a class. Click twice on the class to be edited. The name of the class will highlight in color in the SmartBar.



3. Click Edit Class Profile under Manage Roster on the right-hand side of the SAM window.



4. Under Manage Applications, click each of the student applications you intend to use with the class. (For READ 180 Next Generation Dashboard updates you must have checked READ 180 Next Generation, rSkills Tests Next Generation, Scholastic Reading Counts!, and Scholastic Reading Inventory.)