



Using the Educator Dashboards in *READ 180* Next Generation

For use with *READ 180* Next Generation and SAM v2.0.1 or higher

Copyright © 2011 by Scholastic Inc. All rights reserved. Published by Scholastic Inc.

PDF0204 (PDF)

SCHOLASTIC, SCHOLASTIC ACHIEVEMENT MANAGER, SCHOLASTIC READING COUNTS!, SRI, SCHOLASTIC READING INVENTORY, READ 180, RBOOK, GROUPINATOR, SCHOLASTIC U, EXPERT SPACE, RSKILLS, and associated logos are trademarks and/or registered trademarks of Scholastic Inc. LEXILE is a registered trademark of Metametrics, Inc. Other company names, brand names, and product names are the property and/or trademarks of their respective owners.



Table of Contents

Coming in August 2011	3
The Educator Dashboards	4
Teacher Dashboard	4
Leadership Dashboard.....	5
SAM Connect.....	5
Logging In	6
Using the Educator Access Screen	6
Using the Internet.....	8
Teacher Dashboard	10
Home Screen	10
Class Section	12
Class Screen	14
Data Snapshots	15
Today's Summary	16
Lesson Plans	17
Groupinator™	18
Leadership Dashboard	19
Home Screen	19
Data Snapshot	20
District Data Breakdown.....	21
Technical Support	22



Coming in August 2011

READ 180 Next Generation Teacher and Leadership Dashboards' August 2011 release will feature these enhanced Dashboard functions:

READ 180 Next Generation Interactive Teaching System

The READ 180 Next Generation Interactive Teaching System (ITS) will be fully functional and integrated with the Teacher and Leadership Dashboards. The Today's Summary and Groupinator features will link to lessons and exercises in the *rBook*[®] *Teacher's Edition* through the ITS.

The Groupinator

The Groupinator will dynamically populate groups of students based on their Lexile[®] measure, Comprehension Skill scores in the Topic Software, and end-of-workshop *rSkills* test scores.

Teachers will be able to adjust and save group rosters in the Groupinator.

Lesson Plans

Lesson plans will prepopulate with state and Common Core standards.

Notifications

Notifications will be active and the notifications link will appear on both the Teacher Dashboard and the Leadership Dashboard. Teachers and administrators will be able to opt-in or opt-out of receiving notifications.

Web Gateway

The Web Gateway will link to Scholastic U[™] and any other Scholastic web-based program, including Expert Space[®] if the district has purchased it.

The Educator Dashboards

The Educator Dashboards in *READ 180* Next Generation support teachers and administrators by providing accessible and current student data and resources for successful implementation, effective teaching, and differentiated instruction. The Dashboards provide a comprehensive toolbox of easy-to-use online resources for monitoring and supporting student progress in *READ 180* Next Generation.

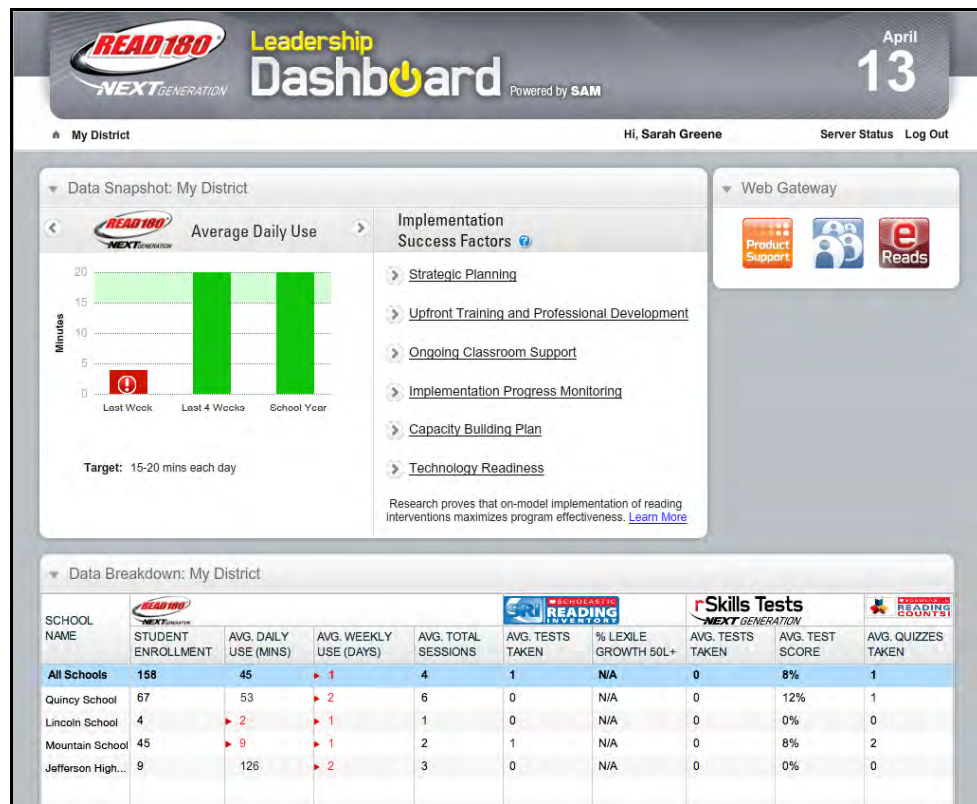
Teacher Dashboard



Teachers may use their Dashboard to:

- Identify and prepare daily lessons for Whole- and Small-Group Instruction.
- Group students for differentiated instruction based on their performance data.
- Monitor the usage of each program in the *READ 180* Next Generation suite.
- Engage in daily professional development for continued learning.

Leadership Dashboard



Administrators may use the Leadership Dashboard to:

- Monitor the usage of each *READ 180* Next Generation technology-based component.
- View student data aggregated from the classroom and school on all SAM Servers in the district.
- Plan effective implementation of the *READ 180* Next Generation software.

SAM Connect

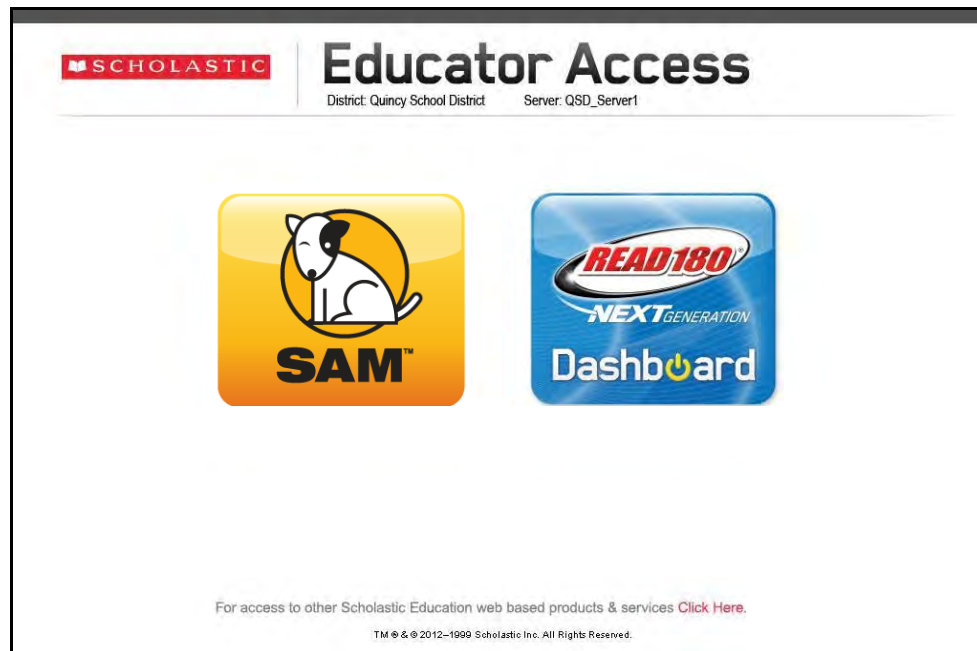
SAM Connect is a two-way, secure Internet connection between the SAM Central Server at Scholastic and customers' registered SAM Servers. SAM Servers must be registered with SAM Connect to use the Educator Dashboards in *READ 180* Next Generation, as well as eReads and the Interactive Teaching System. Servers may be registered when installing *READ 180* Next Generation or by using the registration wizard at: <http://samconnect.scholastic.com/regwiz>. For more information, see the [READ 180 Next Generation Installation Guide](#), or the [SAM Connect User's Guide](#) on the [Scholastic Education Product Support](#) website.

Logging In

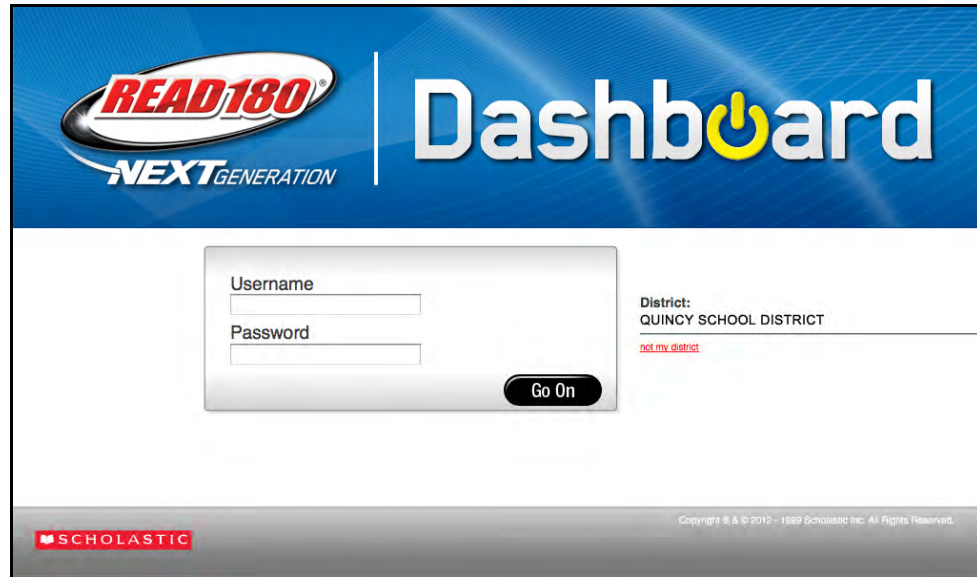
Teachers and administrators may log in to their Dashboards through the Educator Access Screen at school or from any computer connected to the Internet.

Using the Educator Access Screen

If the SAM Server is registered with SAM Connect, then users will see the *READ 180* Next Generation dashboard button on their Educator Access Screen.



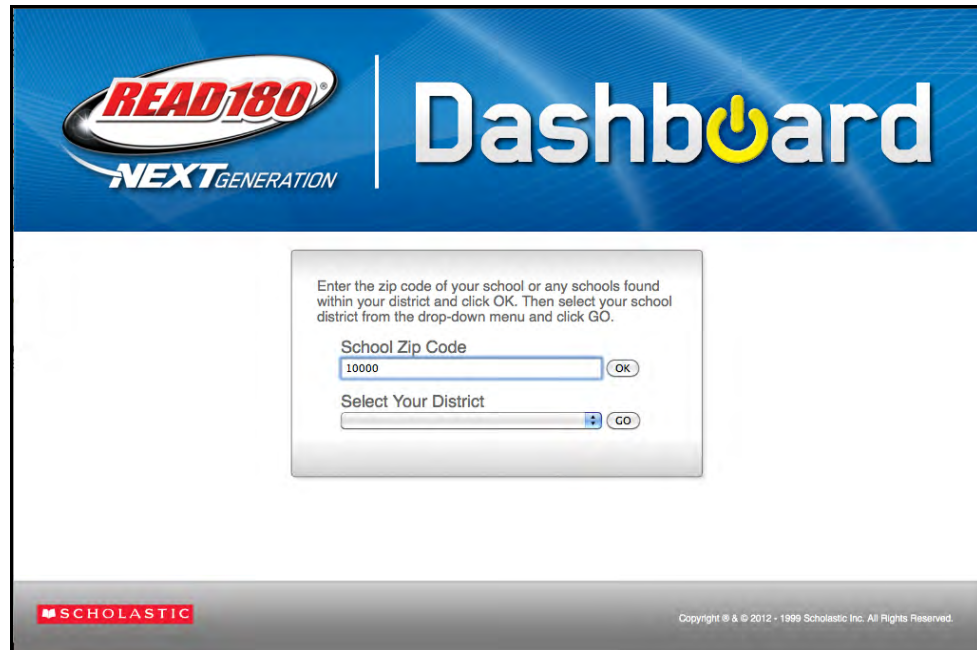
1. Click the *READ 180* Next Generation Dashboard icon to open the Dashboard Login Screen.



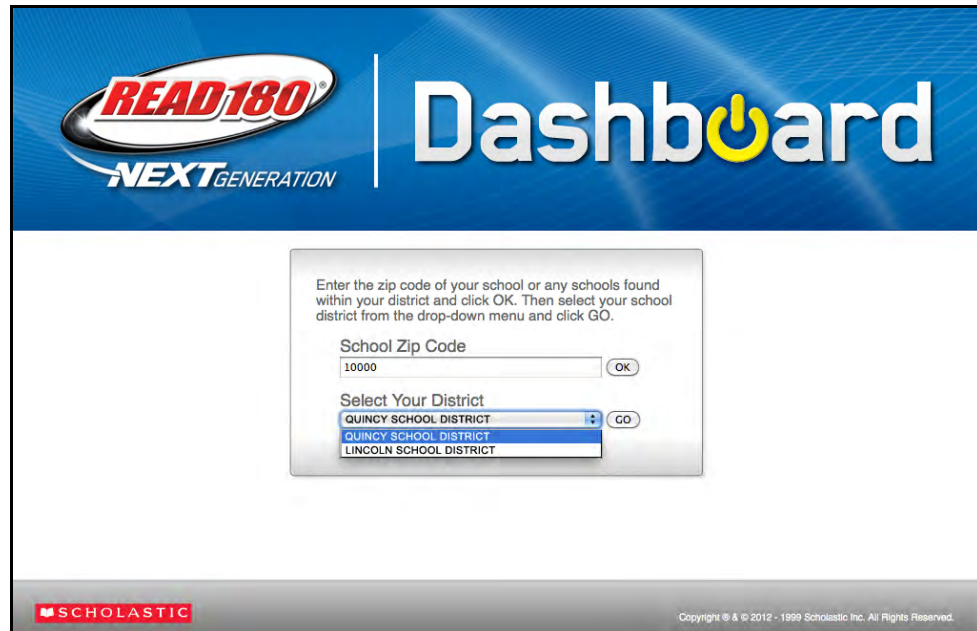
2. Enter the SAM username and password and click **Go On** to go to the Teacher or Leadership Dashboard Home Screen. If the district displayed is incorrect, click Not My District to begin the login process again. If the Dashboard does not open, contact the district administrator to make sure the SAM Server is registered with SAM Connect and that the SAM Server Profiles are set up correctly.

Using the Internet

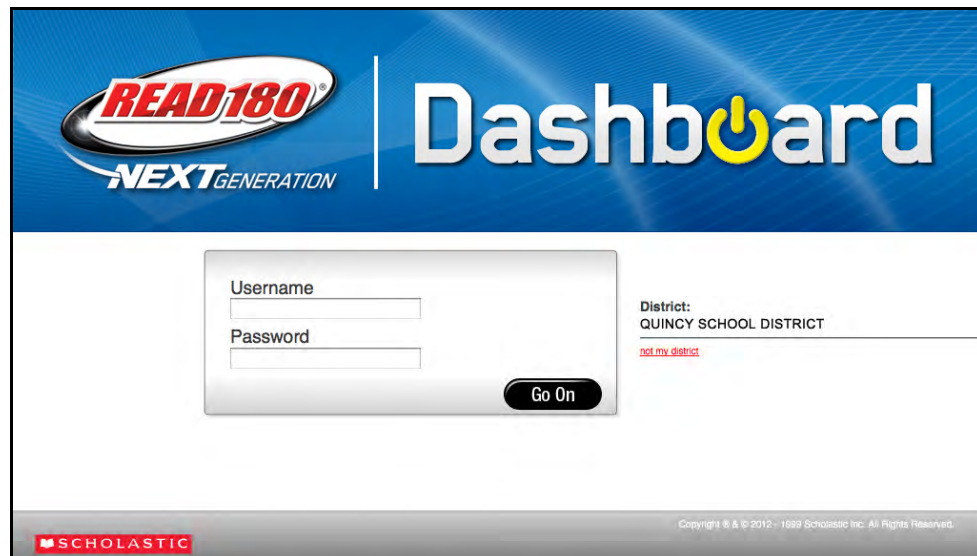
Teachers and administrators may also access their Dashboards from any computer with an Internet connection. To log in:



1. Go to read180.com/teacherdashboard or read180.com/leadershipdashboard from the computer's browser program.
2. Enter the district ZIP code (or the ZIP code of any school in the district) and click **OK**.



3. Select the school district from the pull-down menu, then click **Go**.



4. Enter the SAM username and password and click **Go On**. If the username and password do not connect to the Dashboard, contact the district administrator and confirm that:
 - *READ 180* Next Generation is installed on the SAM Server;
 - There is at least one active license for *READ 180* Next Generation;
 - The SAM Server is registered with SAM Connect;
 - At least one class is managing *READ 180* Next Generation in its profile.

Teacher Dashboard

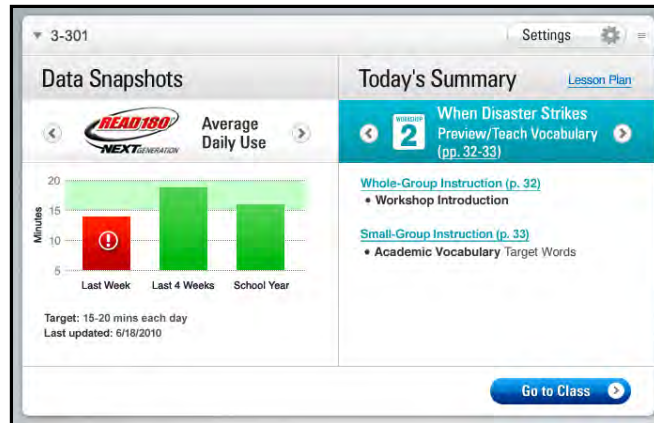
The Teacher Dashboard is composed of two screens, the Home Screen and the Class Screen.

Home Screen

The screenshot displays the Teacher Dashboard Home Screen for two classes, 3-301 and 3-302. The interface is organized into several sections:

- Header:** Includes the READ 180 logo, "Teacher Dashboard Powered by SAM", and the date "June 26".
- Navigation:** A "Home" button and user information "Hi, Sarah Greene | Server Status | Log Out".
- Reporting:** A "Reporting" dropdown menu and a "Schedule a Report" button.
- Class 3-301 Summary:**
 - Data Snapshots:** A bar chart titled "Average Daily Use" showing minutes for "Last Week", "Last 4 Weeks", and "School Year". A target of 15-20 minutes is noted.
 - Today's Summary:** Features a "When Disaster Strikes" workshop (pp. 32-33) with sub-sections for "Whole-Group Instruction" and "Small-Group Instruction".
 - Web Gateway:** Links to ITS, eReads, Community, Scholastic U, and Product Support.
 - Professional Development:** A video titled "Why Homework is Important" and links to "Teacher Workshop 3" and "Teacher Workshop 2".
 - QuickTips:** A tip titled "Boost Vocabulary!" (#3) encouraging the use of Power words.
- Class 3-302 Summary:**
 - Data Snapshots:** A pie chart titled "Average Student Success Rate" showing the percentage of students passing more than 70% of quizzes (green) versus less than 70% (red).
 - Today's Summary:** Features a "When Disaster Strikes" workshop (pp. 48-49) with sub-sections for "Whole-Group Instruction" and "Small-Group Instruction".

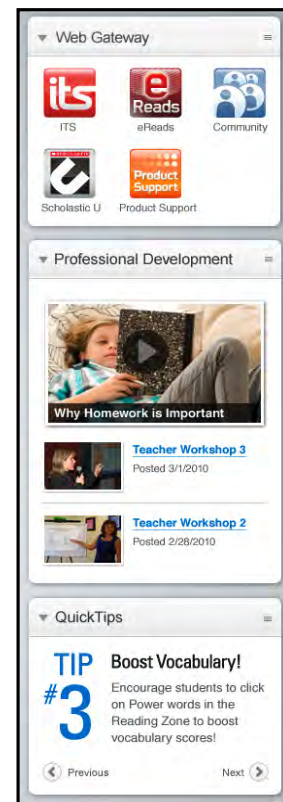
The Teacher Dashboard Home Screen shows a summary of READ 180 Next Generation classes and instruction data. The class name is in the heading.



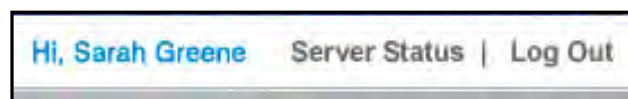
Data snapshots are on the left, a summary of the day's lessons is on the right.

On the right of the Home Screen are interactive links:

- **Web Gateway:** The Web Gateway section contains links to the [Scholastic Education Product Support](#) page, the [READ 180 Next Generation Community Page](#), and eReads. If the district has previously purchased Expert Space or Scholastic U, those icons also appear.
- **Professional Development:** The Professional Development area provides links to videos, articles and presentations linked to daily instruction.
- **Quick Tips:** The Quick Tips link shows a different tip each day that addresses key implementation topics, such as setting up the learning environment, teaching Whole- and Small-Group Instruction, and using the *READ 180* Next Generation software. Scroll through previous and future tips using the left and right arrow icons.

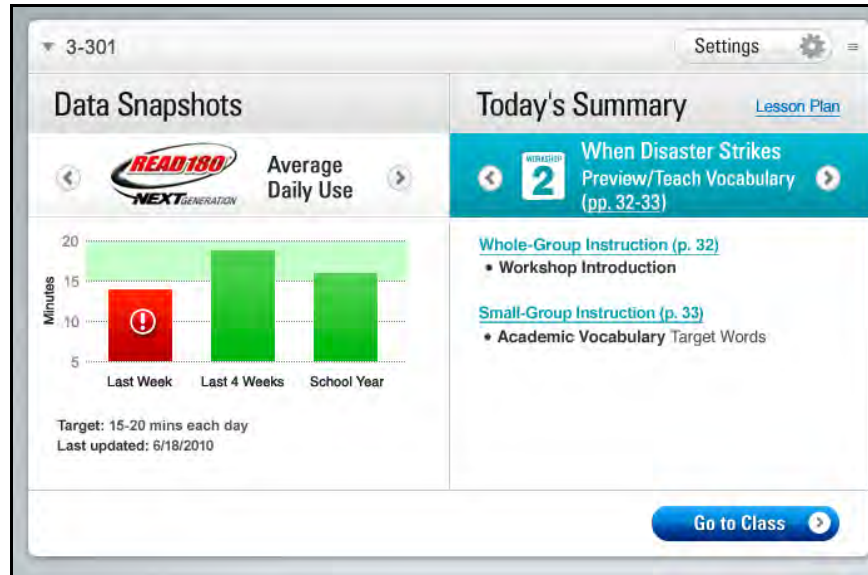


At the top of the Home Screen, next to the teacher's name, are quick links:

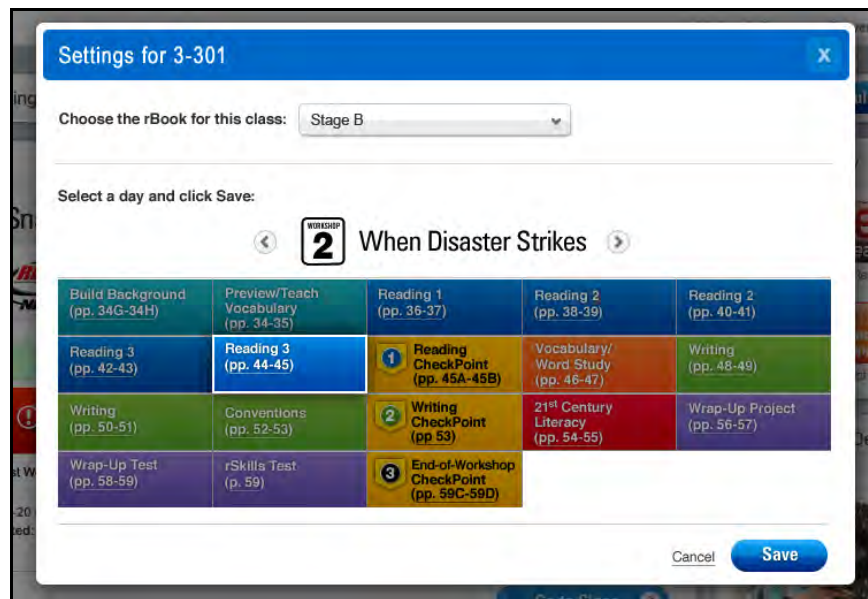


- **Server Status:** Displays the status of the SAM Servers. SAM Connect updates data received from registered servers every 30 minutes. Click the Server Status link to check how current the Dashboard data is.
- **Log Out:** Click to log out of the Dashboard.

Class Section

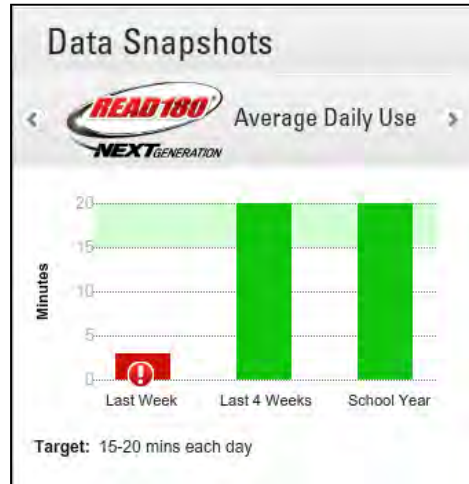


The Class Section shows a summary of each class's data and instruction in the *READ 180* Next Generation program. The name of the class appears at the top of the Class Section. Click the arrow icon to close the section for a particular class.



Click the **Settings** link to open the class's lesson settings. Choose the *rBook* from the pull-down menu, then navigate to the current workshop using the ITS. Selecting a new lesson repopulates the Today's Summary section. Click **Save** to save selections, **Cancel** to return to the window, or the "X" icon to close the window.

The Class Section is divided into two smaller sections:



Data Snapshots: Data Snapshots give an overview of student performance and usage in each *READ 180* Next Generation program: *READ 180* Next Generation, *rSkills Tests* Next Generation, *Scholastic Reading Inventory*, and *Scholastic Reading Counts!* Click the left and right arrow icons next to the program name to scroll through the programs. Data that requires immediate attention is in red. Click the exclamation point icon in the red data graphic to open a window with further information.

- Today's Summary:** Today's Summary provides links to the *READ 180* Next Generation ITS for that day's lesson. Click the **Lesson Plan** link to open the ITS Lesson Plan (page 17) for the lesson. Teachers must use the Settings button to select the *rBook* at first login to populate the Summary.

Today's Summary [Lesson Plan](#)

Workshop 2 **When Disaster Strikes**
Preview/Teach Vocabulary (pp. 32-33)

[Whole-Group Instruction \(p. 32\)](#)

- Workshop Introduction

[Small-Group Instruction \(p. 33\)](#)

- Academic Vocabulary Target Words

3-301 Settings

Data Snapshots **Today's Summary** [Lesson Plan](#)

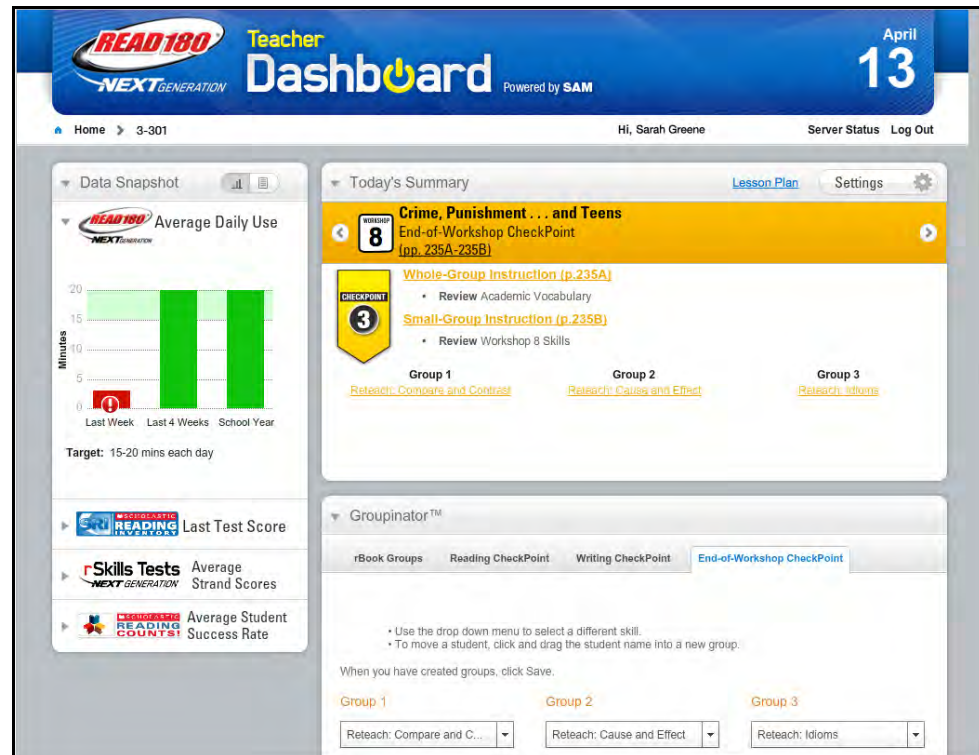
Target: 15-20 mins each day
Last updated: 5/18/2010

Go to Class

Click **Go to Class** at the bottom of the Class Section to open the Class Screen.

Class Screen

Clicking **Go to Class** from the Class Section of the Home Screen opens the Class Screen.



The Class Screen is divided into three sections:

- **Data Snapshot:** The Data Snapshots (*page 15*) provide additional student data for each *READ 180* Next Generation program.
- **Today's Summary:** Today's Summary (*page 16*) provides Whole- and Small-Group instruction links to the *rBook Teacher's Edition* in the ITS.
- **Groupinator:** The Groupinator (*page 18*) allows teachers to set groups of students based on data such as Lexile measure. Teachers may also adjust the recommended groups to fit classroom needs.

Teachers may also click the **Lesson Plan** link to open the ITS Lesson Plan (*page 17*) for the lesson, or **Settings** to open the Settings screen.

Data Snapshots

Data Snapshot

Last Week | Last 4 Weeks | School Year

READ 180 | Average # of sessions: **3**

- Avg. 15-20 min/session: **16/19**
- Avg. session/week > 3: **17/19**
- Comprehension > 70%: **14/19**
- Vocabulary > 70%: **15/19**

SRI | Average # of tests: **2**

- No. Students with 60L+: **5/19**
- 801 - 1000 L: **6**
- 601 - 800 L: **7**
- 401 - 600 L: **3**
- 201 - 400 L: **3**

rSkills | Average # of tests: **2**

- Comprehension > 70%: **5/19**
- Vocabulary > 70%: **4/19**
- Conventions > 70%: **18/19**

Local District | Average # of quizzes: **4**

- Avg. No. Quizzes Passed: **3**
- Quizzes Passed > 70%: **15/19**

The Data Snapshots on the Class Screen offer an expanded view of student data from the Class Section of the Home Screen.

Data may be viewed either in Graph View or List View. Click the graph or list icons in the section header to switch between the two views.

Use the tabs at the top of the Data Snapshot column to view data over different time periods.

Students to Watch

The following 34 student(s) reported average session length outside the expected benchmark of 15-20 minutes during the last School Year:

- Amy Chu
- Chris Collins
- Jamal Evans
- Matt Garcia
- Liz Kramer
- Olivia Rose Nolan

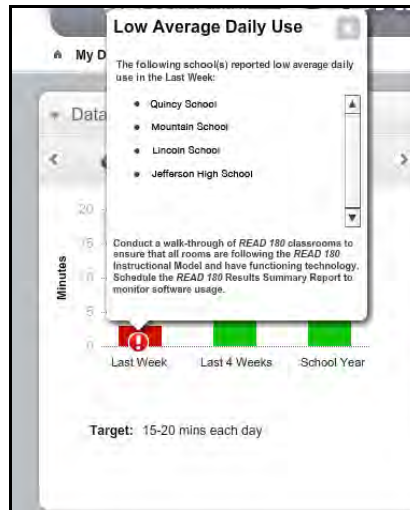
Ensure that these students are logging in and using READ 180 software for the full software rotation and that the rotations are timed appropriately. Schedule the READ 180 Reading Progress Report to monitor software usage.

READ 180 | Average # of sessions: **2**

- Avg. 15-20 min/session: **7/41**
- Avg. session/week 3 or more: **10/41**
- Comprehension ≥ 70%: **35/41**
- Vocabulary ≥ 70%: **35/41**

In list view, click the information (“i”) icons to see detailed student data.

Data in the data snapshots is refreshed through SAM Connect on a weekly basis.



Data that requires immediate attention is in red. Click the exclamation point icon in the red data graphic to open a window with further information.

Click the “X” icon to close the window.

Today's Summary



The Today's Summary section shows links in the ITS to the day's lesson and Whole- and Small-Group instruction in the *rBook Teacher's Edition*. Click **Settings** (page 12) to change the lesson settings. Click **Lesson Plan** to open a printable lesson plan.

Lesson Plans

2

When Disaster Strikes
Reading CheckPoint (pp. 45A-45B)

Instructor: Date: Period:

Stage C Workshop 2: Reading CheckPoint (pp.45A-45B)

Standards:

[+] Add Notes

Objectives:

<p>Content Goals:</p> <ul style="list-style-type: none"> Preview texts to activate prior knowledge about civil rights. View anchor videos to activate and extend prior knowledge about civil rights. 	<p>Language Goals:</p> <ul style="list-style-type: none"> Use active viewing and listening strategies to answer questions about a video and build knowledge about civil rights. Collaborate to respond to questions using simple and compound sentences.
---	---

[+] Add Notes

Do Now (2 minutes)

Respond to the prompt.

- Imagine that you witness an act of discrimination. What would you do? If I saw _____, I would _____.

[+] Add Notes

Whole-Group Instruction (20 minutes)

View the Anchor Video DVD

- Show the **Anchor Video**.
- Discuss different ways people fought discrimination during the civil rights movement.
- Replay the video and record examples of segregation.
- Use **Idea Wave** to list the kinds of protests that took place during the civil rights movement and the dangers the protesters faced.

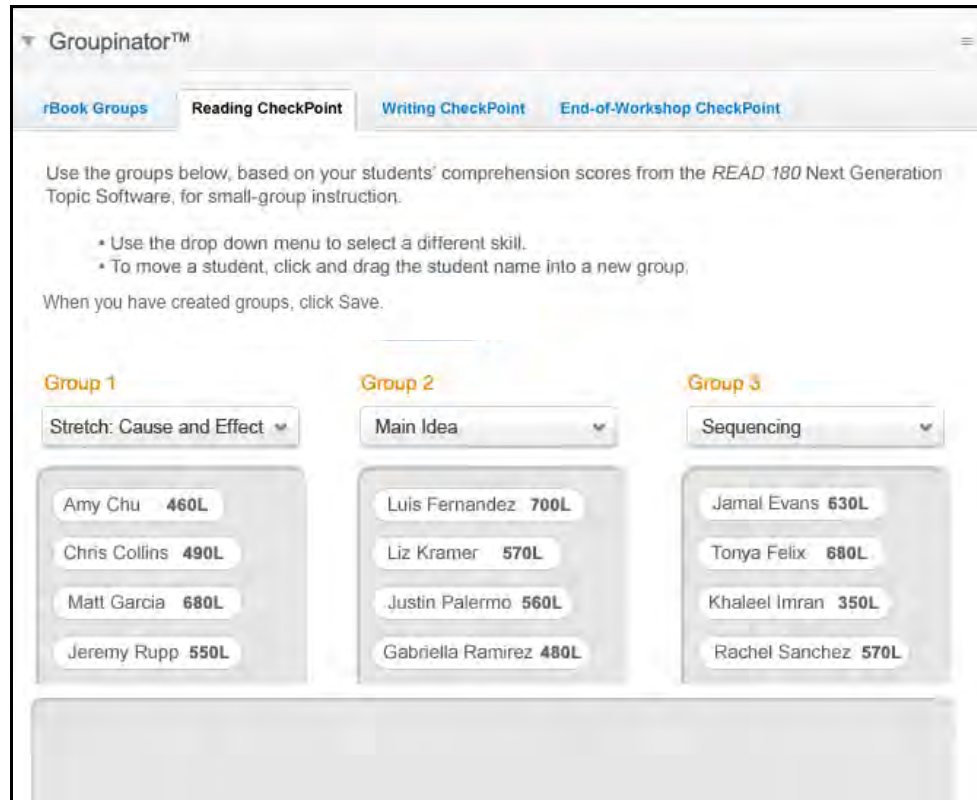
[Cancel](#) [Preview](#) [Save](#)

Clicking Lesson Plan opens a lesson plan for the selected lesson in a new browser window. Add notes and comments to the plan by clicking the [+] icon to open the Add Notes fields.

Teacher-created groups saved in the Groupinator (*page 18*) will also appear on the Lesson Plans.

When finished, click **Preview** to open the file as a printable PDF. Click **Save** to save the file on the computer as a PDF. Click **Cancel** to close the Lesson Plan without saving changes. When finished with the Lesson Plan, click the "X" icon to close the browser window.

Groupinator



Groupinator™

rBook Groups Reading CheckPoint Writing CheckPoint End-of-Workshop CheckPoint

Use the groups below, based on your students' comprehension scores from the *READ 180* Next Generation Topic Software, for small-group instruction.

- Use the drop down menu to select a different skill.
- To move a student, click and drag the student name into a new group.

When you have created groups, click Save.

Group 1	Group 2	Group 3
Stretch: Cause and Effect	Main Idea	Sequencing
Amy Chu 460L	Luis Fernandez 700L	Jamal Evans 630L
Chris Collins 490L	Liz Kramer 570L	Tonya Felix 680L
Matt Garcia 680L	Justin Palermo 560L	Khaleel Imran 350L
Jeremy Rupp 550L	Gabriella Ramirez 480L	Rachel Sanchez 570L

The Groupinator allows teachers to sort students into groups for daily rotations.

Teachers may create four types of groups for *READ 180* Next Generation instruction:

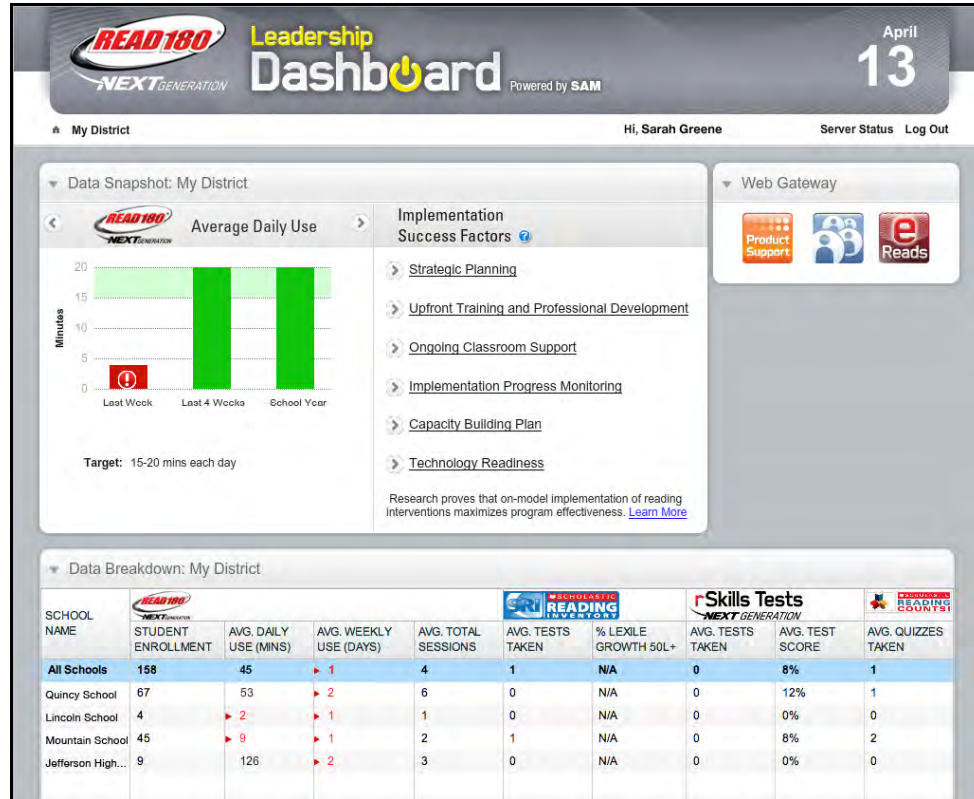
- **rBook Groups:** For use during non-CheckPoint days. Group these students by Lexile measure and use Boost or Stretch strategies from the Lesson Planner or *rBook* to differentiate Small-Group Instruction.
- **Reading CheckPoint Groups:** For use during the Reading CheckPoint. Group these students by Comprehension Skill scores in the Topic Software.
- **Writing CheckPoint Groups:** For use during the Writing CheckPoint. Group these students based on writing needs.
- **End-of-Workshop CheckPoint Groups:** For use at the end of each workshop. Group these students by *rSkills* Tests scores for the workshop just completed.

To move students from group to group, or remove them from a group, scroll to the student's name and click and drag them from group area to group area, or to the ungrouped pool at the bottom of the Groupinator. When satisfied with the group rosters and focus skills, click **Save** to save the group settings. Click the **Clear Groups** link at the bottom of the Groupinator to clear the group settings.



Leadership Dashboard

Home Screen



The Leadership Dashboard Home Screen shows data relevant to the entire district. School administrators may view school-wide data on the Dashboard, and district administrators may view student, class, school, and district-wide data.

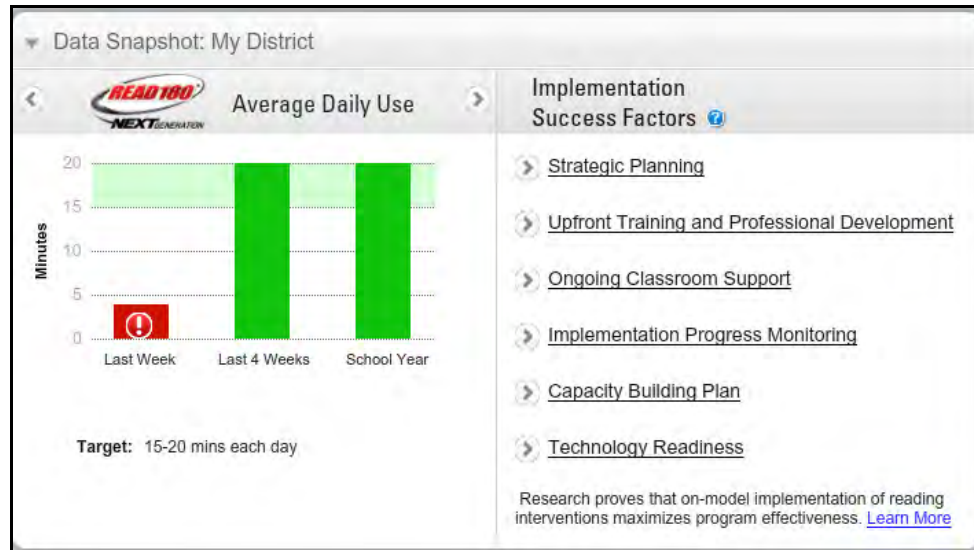
On the right of the Home Screen is the Web Gateway, with links to the [Scholastic Education Product Support](#) page, the [READ 180 Next Generation Community Page](#), eReads, and other programs the district has purchased (including Expert Space or Scholastic U).

Quick links are at the top of the Home Screen:



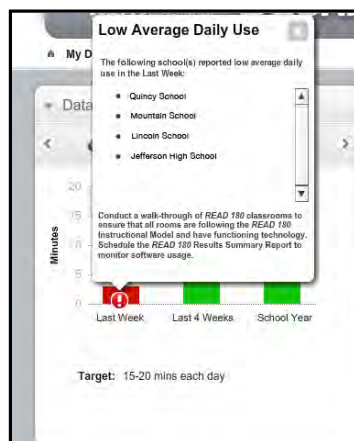
- **Server Status:** Displays the status of all SAM Servers and last update date and time for each (server data is updated weekly).
- **Log Out:** Click to log out of the Dashboard.

Data Snapshot



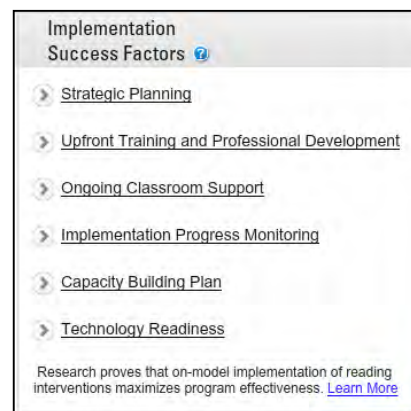
The Leadership Dashboard Data Snapshot shows district-wide usage data for the *READ 180* Next Generation Suite programs as well as Implementation Success Factors for administrator reference.

Click the arrow icons on the left side of the screen to scroll through and view district-wide data for the different *READ 180* Next Generation Suite programs. Scroll over graphs to view data details.



Data requiring attention is in red. Click the exclamation point icon to view detailed school data. Click the "X" icon to close the data window.

The Implementation Success Factors area offers tips and links for successfully implementing and maintaining the district SAM implementation.





District Data Breakdown

SCHOOL NAME	READ 180 NEXT GENERATION			SCHOLASTIC READING NEXT GENERATION		rSkills Tests NEXT GENERATION		SCHOLASTIC READING COUNTS!	
	STUDENT ENROLLMENT	AVG. DAILY USE (MINS)	AVG. WEEKLY USE (DAYS)	AVG. TOTAL SESSIONS	AVG. TESTS TAKEN	% LEXILE GROWTH 50L+	AVG. TESTS TAKEN	AVG. TEST SCORE	AVG. QUIZZES TAKEN
All Schools	158	45	▶ 1	4	1	N/A	0	8%	1
Quincy School	67	53	▶ 2	6	0	N/A	0	12%	1
Lincoln School	4	▶ 2	▶ 1	1	0	N/A	0	0%	0
Mountain School	45	▶ 9	▶ 1	2	1	N/A	0	8%	2
Jefferson High...	9	126	▶ 2	3	0	N/A	0	0%	0

The District Data Breakdown shows sortable *READ 180* Next Generation software data broken down by school and program.

Scroll over the headings to see an explanation of the sorting criteria. Click the headings of the chart to sort the data. Student data requiring immediate attention is listed in red. Click the red arrow icon to see the actionable data in greater detail:

- *READ 180* Next Generation: Students who are using the program less than 15–20 minutes each day;
- *rSkills Tests* Next Generation: Students who are struggling with the listed sections of an *rSkills Test*;
- *Scholastic Reading Counts!*: Students who are struggling to pass *SRC!* quizzes.

District administrators view data for the students, classes, schools, and the district. School administrators view data for students, classes, and the school.

SCHOOL NAME

All Schools

Jefferson High...

Mountain School

Lincoln School

Quincy School

CLASS NAME IN Quincy School

All Classes

3-302

3-303

3-304

3-301

STUDENT NAME IN Sarah's class

All Students (Avg.)

Collins, Chris

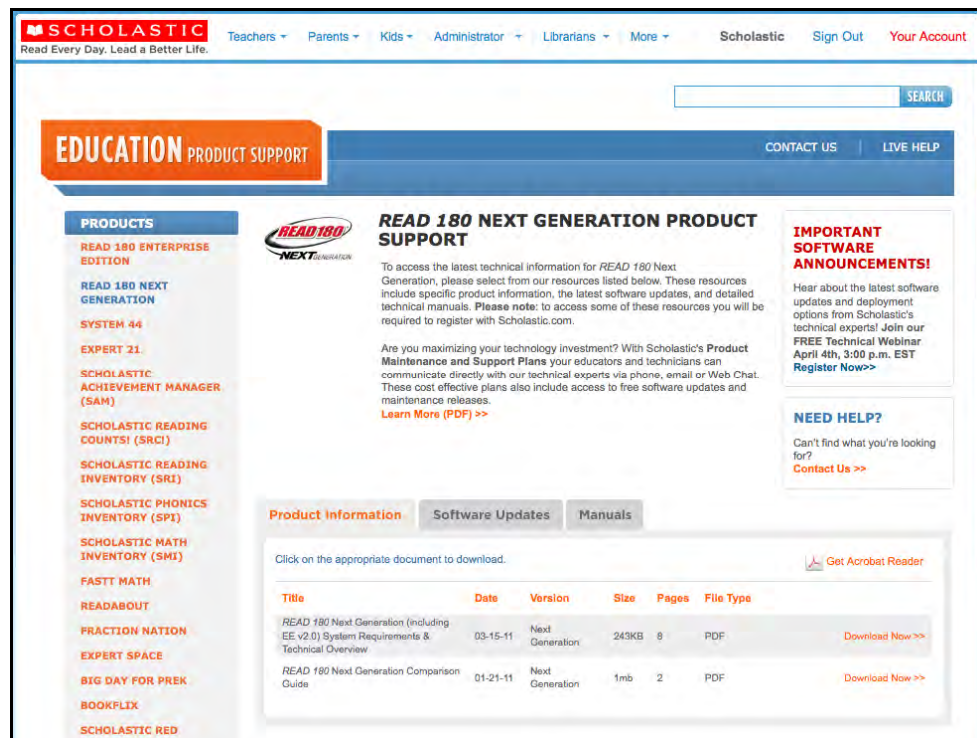
To drill down through the data, double-click a name in the school or class column and the Data Breakdown and Data Snapshot displays data for the selection. Double-click a class name to view data for that class in the chart and in the Data Snapshot.

🏠 My District
➤ Quincy School
➤ 3-301

To drill back up through the data, click **My District** at the top of the Home Screen to return to district-wide data or the school link to view only the school data.

Technical Support

For questions or other support needs, visit the [Scholastic Education Product Support](http://www.scholastic.com/read180ng/productsupport) website at www.scholastic.com/read180ng/productsupport.



EDUCATION PRODUCT SUPPORT

PRODUCTS

- READ 180 ENTERPRISE EDITION
- READ 180 NEXT GENERATION
- SYSTEM 44
- EXPERT 21
- SCHOLASTIC ACHIEVEMENT MANAGER (SAM)
- SCHOLASTIC READING COUNTS! (SRCI)
- SCHOLASTIC READING INVENTORY (SRI)
- SCHOLASTIC PHONICS INVENTORY (SPI)
- SCHOLASTIC MATH INVENTORY (SMI)
- FASTT MATH
- READABOUT
- FRACTION NATION
- EXPERT SPACE
- BIG DAY FOR PREK
- BOOKFLIX
- SCHOLASTIC RED

READ 180 NEXT GENERATION PRODUCT SUPPORT

To access the latest technical information for READ 180 Next Generation, please select from our resources listed below. These resources include specific product information, the latest software updates, and detailed technical manuals. Please note: to access some of these resources you will be required to register with Scholastic.com.

Are you maximizing your technology investment? With Scholastic's **Product Maintenance and Support Plans** your educators and technicians can communicate directly with our technical experts via phone, email or Web Chat. These cost effective plans also include access to free software updates and maintenance releases. [Learn More \(PDF\) >>](#)

IMPORTANT SOFTWARE ANNOUNCEMENTS!

Hear about the latest software updates and deployment options from Scholastic's technical experts! Join our **FREE Technical Webinar** April 4th, 3:00 p.m. EST [Register Now>>](#)

NEED HELP?

Can't find what you're looking for? [Contact Us >>](#)

Product Information | Software Updates | Manuals

Click on the appropriate document to download. [Get Acrobat Reader](#)

Title	Date	Version	Size	Pages	File Type	
READ 180 Next Generation (including EE v2.0) System Requirements & Technical Overview	03-15-11	Next Generation	243KB	8	PDF	Download Now >>
READ 180 Next Generation Comparison Guide	01-21-11	Next Generation	1mb	2	PDF	Download Now >>

At the site, users will find program documentation, manuals, and guides, as well as Frequently Asked Questions and live chat support.

For specific questions regarding the Scholastic program suite, contact customer service to speak to a representative for each EE program at:

- 1-800-283-5974 (all EE products)
- 1-800-927-0189 (other versions)

For specific questions about using SAM with Scholastic programs, click **Help** in the Quick Links along the top of any screen in SAM.